

2021

**GREEN
AUDIT
REPORT**



SHREE GURU GOBIND SINGH JI GOVERNMENT COLLEGE

Paonta Sahib, Distt. Sirmour (H.P.) 173025

1. INTRODUCTION

Biodiversity has been one of the most important basis of human life. We have been using the varied natural resources in different ways to satisfy our needs. Conservation of biodiversity is paramount for sustaining life on the earth. Regular inventorization and monitoring of biodiversity is essential for conservation and sustainable use of its components. Green audit serve as a means to identify opportunities to sustainable development practices, enhance environmental quality, improve health, hygiene and safety. The activities pursued by colleges' can sensitize youths, the practice of various environmental manners viz. plantation; energy conservation; waste disposal and water management etc. shall improve the environmental conditions

2. About College

Established in the year 1994, Shree Guru Gobind Singh Ji Government College, Paonta Sahib has earned its name after Shree Guru Gobind Singh Ji, the 10th Sikh Guru, who commemorated the Khalsa Panth, during his sojourn between 1685-1689.

The college campus is spread over 27 Bighas (21,850.8 m²) of land in village ShubhKhera of Paonta Sahib, at a walking distance of 1.5 km from the bus stand. The college is affiliated to the Himachal Pradesh University (HPU), Shimla and recognized by the University Grants Commission (UGC) under 2f and 12b of UGC Act. Three departments of the college in the science faculty, namely, Botany, Chemistry & Zoology have been awarded financial support under star college scheme of the Department of Biotechnology (DBT), Ministry of Science & Technology, Government of India.

The college has been accredited with Grade B++ by NAAC (National Assessment and Accreditation Council) in the first cycle in the year 2017 and is recently included among the Utkrisht Mahavidyalayas of Himachal Pradesh.

2.1. Vision of the Institution

The institution aspires to provide affordable quality education to the diverse strata of population including the poorest and weakest sections of the area; and create an environment

conducive to the achievement of the highest standards of academic excellence along with multi-faceted development of personality of the students, transforming them into socially aware and responsible citizens of the country.

2.2. Mission of the Institution:

The motto of our college fully enshrines the mission statement:

शीलवृत्फला हि विद्या (*shilvritphala hi vidya*)

—The Fruit of Learning is Good Character and Righteous Conduct.

The institution's mission is to create awareness that education is a continuous quest and develop individuals who are assets to the contemporary society.

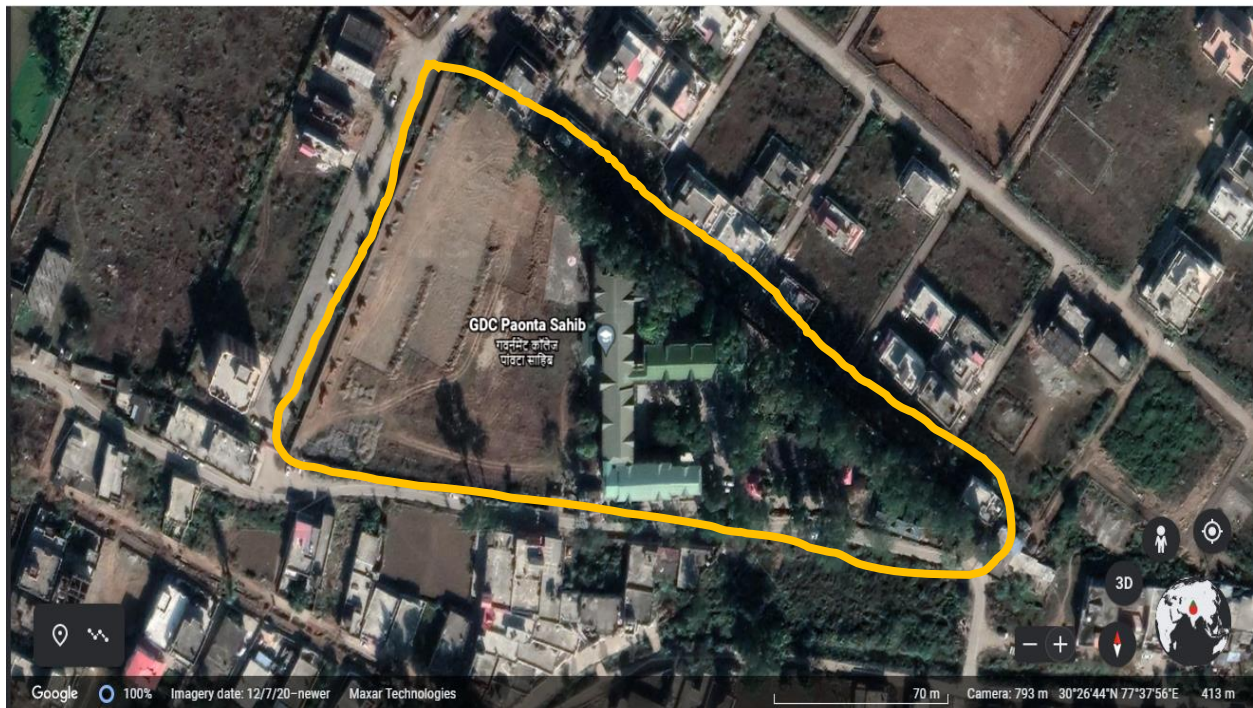


Figure 1. Location of College (Google earth image)



Figure 2. College building and playground (Drone Camera image)

2.3. Courses offered by the college

Sl. No.	Programme Level	Name of the Programme/Course	Duration
1	Under-Graduate	B.A.	3 years
2		B.Sc.	3 years
3		B.Com.	3 years
4		B.C.A. (Self-financing)	3 years
5	Post-Graduate	M.A. English	2 years
6		M.A. Hindi	2 years
7		M.A. Political Science	2 years
8		M.A. Economics	2 years
9		M.Com.	2 years
10	PG Diploma	PGDCA (Self-financing)	1 year

2.4. The student and faculty strength of the college

	Male	Female	Total
Students	1181	1011	2192
Teaching Staff	17	20	37
Non-Teaching Staff	10	04	14
Total	1208	1035	2245

2.5. Physical Infrastructure

The college campus is spread over 16 acres of land in village ShubhKhera of Paonta Sahib.

Name of Building	Purpose
Administrative Block	Principal Office, College Offices, Office of NSS, R&R, IQAC, IT Laboratory, Multipurpose Hall, Washrooms
Academic Block	Class rooms, laboratories, library, Washrooms
Old Science Block	Chemistry laboratories, Staff room, wash room
New Academic Block	Chemistry laboratories, Geography laboratory, class rooms
APJ Kalam Block	Music department, PG classrooms, Gymnasium
Principal Resident	IGNOU Office
Canteen	Food, tea and snacks for stakeholders

3. Objectives of Green Auditing

The major objective of green audit is to document on biodiversity and other resources; and improve resource quality and sustainable practices.

The specific objectives are:


- To prepare a checklist of flora and fauna diversity in and around the college campus.
- To suggest measures to improve biodiversity within the college campus.

3.1. Biodiversity Audit

Field visits to different parts of college campus were conducted by the committee members along with students of eco club. The key focus of the visit was on assessing the status of the green cover, floral and faunal diversity of the college and its documentation.



Table 1. List of Plants in the college campus

A. Area around Community Hall			
Sr. No.	Common Name	Botanical name	No(s)
1	Jamun	<i>Syzygiumcumini</i>	2
2	Mango	<i>Mangiferaindica</i>	2
			
3	Eucalyptus	<i>Eucalyptus globulus</i>	14
4	Bael	<i>Aeglemarmelos</i>	2
5	Amla	<i>Phyllanthusemblica</i>	2
6	Shehtoot	<i>Morus alba</i>	1
7	Kachnar	<i>Bauheniavariegata</i>	1
8	Guava	<i>Psidiumguajava</i>	1
B. Area around Old Administrative Block			
1	Teak	<i>Tectonagrandis</i>	20
2	Shisham	<i>Dalbergiasissoo</i>	2
3	Safeda	<i>Eucalyptus globulus</i>	15
4	Bael	<i>Aeglemarmelos</i>	1
5	Kachnar	<i>Bauheniavariegata</i>	2




6	Bottle Brush	<i>Callistemon</i> sps.	1
7	Gulmohar	<i>Delonix regia</i>	1
8	Bougainvillea	<i>Bougainvillea spectabilis</i>	1
9	Guava	<i>Psidium guajava</i>	1
10	Toon	<i>Toona sinensis</i>	1
11	Ashoka	<i>Saraca indica</i>	3

C. Botanical Garden

1	Grevillea	<i>Grevillea robusta</i>	1
2	Bougainvillea	<i>Bougainvillea glabra</i>	1
3	Tecoma	<i>Tecoma stent</i>	1
4	Weeping fig	<i>Ficus benjamina</i>	1
5	Rauwolfia	<i>Rauwolfia serpentina</i>	1
6	Nerium	<i>Nerium indicum</i>	1
7	Neem	<i>Azadirachta indica</i>	1

8	Amla	<i>Phyllanthus emblica</i>	2
9	Guava	<i>Psidiumguajava</i>	2
10	Thuja	<i>Thujaoccidentalis</i>	6
11	Arucaria	<i>Araucaria araucana</i>	1
12	Chakotra	<i>Citrus maxima</i>	2
13	Chameli	<i>Jasminum officinale</i>	2
14	Toon	<i>Toona sinensis</i>	1
15	Curry leaf	<i>Murraya koenigii</i>	2
16	Cycas	<i>Cycasrevoluta</i>	5
17	China rose	<i>Hibiscus rosa-sinensis</i>	1
18	Tradescantia	<i>Tradescanti apallida</i>	1
19	Rubber plant	<i>Ficus elastica</i>	1
20	Dracaena	<i>Dracaena reflexa</i>	1
21	Behda	<i>Terminalia bellirica</i>	1
22	Ornamental plants viz. <i>Dahlia, Salvia, Rose, Calendula etc.</i>		



D. Herbal Garden			
1	Damask Rose	<i>Rosa damascena</i>	5
2	Podina	<i>Mentha arvensis</i>	2
3	Chitrak	<i>Plumbago zeylenica</i>	2
4	Aprajita	<i>Clitoria ternatea</i>	2
			
5	Lemon Grass	<i>Cymbopogon citratus</i>	5
6	Tulsi	<i>Ocimum sanctum</i>	5
7	Gudahal	<i>Hibiscusrosa-sinensis</i>	1
8	Guldaudi	<i>Chrysanthemum indicum</i>	10
9	Sadabahar	<i>Chrysanthemum indicum</i>	2
10	Stevia (Candy leaf)	<i>Stevia rebaudiana</i>	4
11	Bael	<i>Aegle marmelos</i>	4
12	Satavar	<i>Asparagus racemosus</i>	4
13	Kachnar	<i>Bauhinia Variegata</i>	10

14	Aak	<i>Calotropis procera</i>	4
15	Bach	<i>Acorus calamus</i>	5
16	Chameli	<i>Jasminum officinale</i>	1
17	Curry leaf	<i>Murraya koenigii</i>	4
18	Pathacharuti	<i>Bryophyllum pinnatum</i>	2
19	Parijat / Harsingar	<i>Nyctanthes arbour-tristis</i>	1
20	Shami tree	<i>Prosopis cineraria</i>	2
21	Sarpgandha	<i>Rauwolfia serpentina</i>	2
22	Arjun tree	<i>Terminalia arjuna</i>	1
23	Eucalyptus	<i>Eucalyptus globulus</i>	11
24	Vasaka	<i>Adhatoda vasica</i>	3
25	Aloe	<i>Aloe barbedensis</i>	7
26	Amla	<i>Emblica officinalis</i>	1
27	Ashawgandha	<i>Withania somnifera</i>	5



Vasaka: *Adhatoda vasica*



Ashawgandha: *Withania somnifera*



Kala bansa: *Barleria prionitis* L



Parijaat: *Nyctanthes arbour-tristis*



Aak: *Calotropis* sps.



Milk bush: *Euphorbia tithymaloides*



Chitrak: *Plumbago zeylenica*



Patharchat: *Bryophyllum pinnatum*



Arjuna: *Terminalia arjuna*



Lemon grass: *Cymbopogon citratus*



Bael: *Aegle marmelos*



Curry leaf: *Murraya koenigii*



Amla: *Emblica officinalis*



Aloe: *Aloe barbedensis*



Bach: *Acorus calamus*



Satavar: *Aegle marmelos*

E. Main Gate			
1	Eucalyptus	<i>Eucalyptus globulus</i>	4
2	Asoka	<i>Saraca indica</i>	7
3	Gulmohar	<i>Delonix regia</i>	2
4	Neeli Gulmohar	<i>Jacaranda mimosifolia</i>	1
5	Toon	<i>Toona sinesis</i>	1
6	Mango	<i>Mangifera indica</i>	1
7	Guava	<i>Psidium guajava</i>	3
8	Shehtoot	<i>Morus alba</i>	1
Administrative Block			
1	Toon	<i>Toona sinesis</i>	5
2	Kachnar	<i>Bauhenia variegata</i>	2
3	Shehtoot	<i>Morus alba</i>	2
4	Gulmohar	<i>Delonix regia</i>	2
5	Ashoka	<i>Saraca indica</i>	5
6	Golden shower	<i>Cassia fistula</i>	2
G. Play Ground			
1	Eucalyptus	<i>Eucalyptus globulus</i>	10
2	Toon	<i>Toona sinesis</i>	1
3	Shehtoot	<i>Morus alba</i>	2
4	Kachnar	<i>Bauhenia variegata</i>	7
5	Amla	<i>Phyllanthus emblica</i>	3
6	Jamun	<i>Syzygiumcumini</i>	3
7	Guava	<i>Psidiumguajava</i>	5
8	Ashoka	<i>Saracaindica</i>	2
9	Thuja	<i>Thujaoccidentalis</i>	4
10	Peepal	<i>Ficusreligiosa</i>	1
11	Aak	<i>Calotropis</i>	1



H. Backside of College Campus

1	Toon	<i>Toona sinensis</i>	5
2	Kachnar	<i>Bauhenia variegata</i>	2
3	Eucalyptus	<i>Eucalyptus globules</i>	13

In addition various outdoor/indoor seasonal and perennials ornamental plants are potted and placed at prominent places in the college campus.



GREEN PRACTICES: Plantation Drives



3.2 Faunal Diversity in Campus

SGGSJ Government College Paonta Sahib is located in Sirmour District of Himachal Pradesh. Paonta Sahib is an industrial town known for Pharmaceuticals, cements, and lime chemical industries. It has got extreme climates. The climatic condition of the Paonta Sahib is very suitable for a wide variety of flora and fauna to support its rich biodiversity. The faunal Diversity of the campus has been studied and documented as below:

Table 2: List of Faunal diversity seen in the college campus

Sr. No.	Common Name	Scientific Name
1	Common Myna	<i>Acridotheres tristis</i>
2	House Sparrow	<i>Passer domesticus</i>
3	House Crow	<i>Corvus splendens</i>
4	Cuckoo	<i>Cuculidae</i>
5	Snakes (Common Krait, Russel's Viper)	
6	Yellow Wasp	<i>Ropalidia marginata</i>
7	Butter Fly (Golden emperor, Lime butterfly, Ringed Argus, Spotted Demon)	
8	Pied Myna	<i>Gracupica contra</i>
9	Parrot	<i>Psittaciformes</i>
10	Pigeon	<i>Columba livia domestica</i>
11	Red-Vented Bulbul	<i>Pycnonotus cafer</i>
12	Large Egret	<i>Ardea alba</i>
13	Garden Tiger Moth	<i>Arctia caja</i>
14	Owl	<i>Athene brama</i>
15	Oleander Moth	<i>Syntomeida epilais</i>
16	Slender skimmer	<i>Orthetrum sabina</i>
17	Beetles (Ladybugs, scarabs, Blister beetles)	
18	Grasshopper	<i>Schistocerca americana</i>
19	Ants	<i>Formica rufa</i>
20	Monkey	<i>Simiiformes catarrhini</i>
21	Dog	<i>C. familiaris</i>

22	Squirrel	<i>Sciurus</i>
----	----------	----------------

4. Conclusion and Recommendations

Green Audit is the most efficient way to identify the strength and weakness of environmental sustainable practices and to find a way to solve problem. Even though the college does perform fairly well, the recommendations in this report highlight many ways in which the college can work to improve its actions and become a more sustainable institution.

- Landscaping of the botanical garden and college campus and development of medicinal plant nursery.
- Plant more plants in herbal garden.
- Set up water recycling unit where the recycled water can be used for gardening and other purposes in the college.
- Develop a butterfly garden that arouses appreciation towards flora and fauna diversity.
- Name all the trees and plants with its common name and scientific name to generate enthusiasm for learners.
- Organize earn while learn eco-friendly programmes.
- Ensure participation of students and teachers in local environmental issues and conduct seminars, workshops and exhibitions on environmental education.
- Display various slogans and pictures to protect environment.

Green Audit Committee

- Dr. Jahid Ali Malik
- Sh. Kamlesh Kumar
- Smt. Nandini Kanwar
- Divisional Forest Officer, Paonta Sahib (Invited external member)